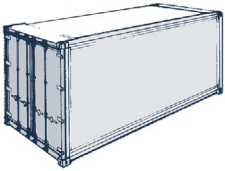


# Ocean container specifications



## General Purpose Containers

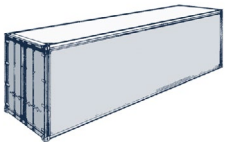
Suitable for any general cargo.



	Maximum Inside Dimensions			Door Opening		Top Opening		Tare Weight (kg/lbs)	Cubic Capacity (m <sup>3</sup> /cu. ft.)	Maximum Payload (kg/lbs)
	Length	Width	Height	Width	Height	Length	Width			
20' Dry Freight Container	5.895m	2.350m	2.392m	2.340m	2.292m			2,250 kg	33.2 m <sup>3</sup>	28,230 kg
	19'4 1/8"	7'8 1/2"	7'10 1/8"	7'8 1/8"	7'6 1/4"			4,960 lbs	1,172 cu. ft.	62,240 lbs
40' Dry Freight Container	12.029m	2.350m	2.392m	2.234m	2.292m			3,780 kg	67.7 m <sup>3</sup>	26,700 kg
	39'5 1/2"	7'8 1/2"	7'10 1/8"	7'8 1/2"	7'6 1/4"			8,330 lbs	2,390 cu. ft.	58,870 lbs

## High Cube General Purpose Containers

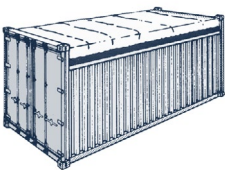
Specifically for light, voluminous cargoes or those for excessive height (up to 2.67 m).



	Maximum Inside Dimensions			Door Opening		Top Opening		Tare Weight (kg/lbs)	Cubic Capacity (m <sup>3</sup> /cu. ft.)	Maximum Payload (kg/lbs)
	Length	Width	Height	Width	Height	Length	Width			
40' High Cube Container	12.024m	2.350m	2.697m	2.340m	2.597m			4,020 kg	76.3 m <sup>3</sup>	26,460 kg
	39'5 3/8"	7'8 1/2"	8'10 1/8"	7'8 1/8"	8'6 1/4"			8,860 lbs	2,694 cu. ft.	58,340 lbs
45' High Cube Container	13.582m	2.347m	2.690m	2.340m	2.584m			4,110 kg	85.7 m <sup>3</sup>	28,390 kg
	44'6 1/2"	7'8 1/4"	8' 10"	7' 8"	8'5 3/4"			9,061 lbs	3,026 cu. ft.	62,589 lbs

## Open Top Containers

Especially for overheight cargo, loading from top side; eg. - by crane, loading from door side: eg. - with cargo hanging from overhead tackle.



	Maximum Inside Dimensions				Top Opening		Tare Weight (kg/lbs)	Cubic Capacity (m <sup>3</sup> /cu. ft.)	Maximum Payload (kg/lbs)
	Length	Width	Middle	Side	Length	Width			
20' Open Top Container	5.895m	2.350m	2.394m	2.364m	5.895m	2.350m	2,100 kg	32.45 m <sup>3</sup>	21,900 kg
	19' 4"	7'8 1/2"	7'10 1/4"	7' 9"	19'4"	8' 1/2"	4,630 lbs	1,146 cu. ft.	48,280 lbs
40' Open Top Container	12.023m	2.335m	2.378m	2.318m	12.023m	2.335m	3,800 kg	66.7 m <sup>3</sup>	26,680 kg
	39'5 3/8"	7' 8"	7'9 5/8"	7'7 1/4"	39'5 3/8"	7' 8"	8,380 lbs	2,354 cu. ft.	58,820 lbs

## Flat Racks

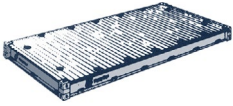
Specifically for heavy-lifts and overwidth cargoes. Strong bottom construction with fixed endwalls (which allow bracing and lashing of cargo as well as stacking).



	Maximum Inside Dimensions			Door Opening		Top Opening		Tare Weight (kg/lbs)	Cubic Capacity (m <sup>3</sup> /cu. ft.)	Maximum Payload (kg/lbs)
	Length	Width	Height	Width	Height	Length	Width			
20' Flat Rack Container	5.625m	2.208m	2.172m					2,800 kg		21,200 kg
	18'5 3/8"	7'2 7/8"	7'1 1/2"					6,170 lbs		46,740 lbs
40' Flat Rack Container	11.712m	2.232m	1.981m					4,750 kg		25,730 kg
	38'5 1/8"	7'3 7/8"	6'6"					10,470 lbs		56,730 lbs
40' Collapsible Flat Rack	11.660m	2.200m	2.245m					5,700 kg		39,300 kg
	38'3 1/8"	7'2 5/8"	7'4 3/8"					12,570 lbs		86,640 lbs

## Platforms

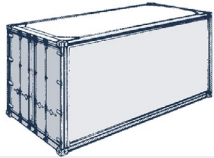
Especially for heavy loads and oversized cargo.



	Maximum Inside Dimensions			Door Opening		Top Opening		Tare Weight (kg/lbs)	Cubic Capacity (m <sup>3</sup> /cu. ft.)	Maximum Payload (kg/lbs)
	Length	Width	Height	Width	Height	Length	Width			
20' Steel Frame with Softwood Floor	6.058m 20'	2.438m 8'						2,100 kg 4,630 lbs		21,900 kg 48,280 lbs
40' Steel Frame with Softwood Floor	12.192m 40'	2.438m 8'						4,200 kg 9,260 lbs		40,800 kg 89,950 lbs

## Ventilated Containers

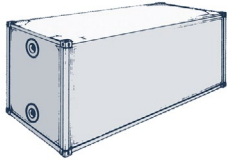
Specially for cargoes requiring ventilation. Natural ventilation is provided by openings in top and bottom longitudinal rails.



	Maximum Inside Dimensions			Door Opening		Top Opening		Tare Weight (kg/lbs)	Cubic Capacity (m <sup>3</sup> /cu. ft.)	Maximum Payload (kg/lbs)
	Length	Width	Height	Width	Height	Length	Width			
20' Ventilated Container	5.888m 19'3 3/4"	2.346m 8'3 3/8"	2.392m 7'10 1/8"	2.334m 7'7 7/8"	2.290m 7'6 1/8"			2,400 kg 5,290 lbs	33 m <sup>3</sup> 1167 cu. ft.	28,080 kg 61,910 lbs

## Insulated Containers

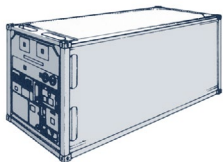
Especially for cargo which needs constant temperatures above or below freezing point. Temperature is controlled by ship's/terminals cooling plant or 'clip-on-unit'. Possible temperatures inside the 20' container, depending on specification of respective cooling device, from about +12°C to -25°C (+57°F to -14°F). Possible temperatures inside the 40' container, depending on specification of respective cooling device, from about +13°C to -22°C (+57°F to -8°F).



	Maximum Inside Dimensions			Door Opening		Top Opening		Tare Weight (kg/lbs)	Cubic Capacity (m <sup>3</sup> /cu. ft.)	Maximum Payload (kg/lbs)
	Length	Width	Height	Width	Height	Length	Width			
20' Insulated Container	5.652m 18'6 1/2"	2.235m 7'4"	2.000m 6'6 3/4"	2.235m 7'4"	2.083m 6'10"			2,500 kg 5,510 lbs	28.35m <sup>3</sup> 930 cu. ft.	17,820 kg 39,290 lbs
40' Insulated Container	11.750m 38'6 5/8"	2.250m 7'4 1/2"	2.080m 6'9 7/8"	2.250m 7'4 1/2"	2.180m 7'1 7/8"			4,650 kg 10,250 lbs	58.4m <sup>3</sup> 2060 cu. ft.	25,830 kg 56,950 lbs

## Reefer Containers

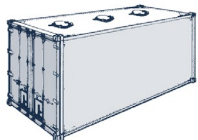
Especially for cargo which needs constant temperatures above or below freezing point. The reefer unit is a compact-design compressor unit with air cooled condenser. It switches automatically from cooling to heating operation (and vice versa), if a change of the outside temperatures make it necessary. Permissible temperature settings: +25°C to -25°C (+77°F to -13°F).



	Maximum Inside Dimensions			Door Opening		Top Opening		Tare Weight (kg/lbs)	Cubic Capacity (m <sup>3</sup> /cu. ft.)	Maximum Payload (kg/lbs)
	Length	Width	Height	Width	Height	Length	Width			
20' Reefer Container	5.340m 17'6 1/4"	2.200m 7'2 5/8"	2.154m 7' 3/4"	2.200m 7'2 5/8"	2.220m 7'2 3/8"			3,380 kg 7,450 lbs	26.4 m <sup>3</sup> 932 cu. ft.	20,620 kg 45,460 lbs
40' Reefer Container	11.141m 36'4 5/8"	2.197m 7'2 1/2"	2.096m 6'10 1/2"	2.197m 7'2 1/2"	2.173m 7'1 1/2"			6,010 kg 13,250 lbs	54.2 m <sup>3</sup> 1920 cu. ft.	24,470 kg 53,950 lbs
40' High Cube Reefer Container	11.634m 38' 2"	2.288m 7'6 1/8"	2.378m 7'9 5/8"	2.288m 7'6 1/8"	2.517m 8'3 1/8"			4,180 kg 9,220 lbs	66.5 m <sup>3</sup> 2,348 cu. ft.	26,300 kg 57,980 lbs

## Bulk Containers

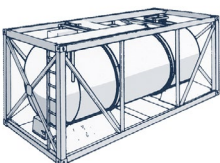
Specifically for loose/bulk cargoes, e.g. malt. Three manholes for top loading of each container. Distance to centerline manhole 1.83m (6'). One discharge opening in each door wing. on demand short discharge tubes can be installed to move the cargo in desired directions. Fastening of liner bag possible.



	Maximum Inside Dimensions			Door Opening		Top Opening		Tare Weight (kg/lbs)	Cubic Capacity (m <sup>3</sup> /cu. ft.)	Maximum Payload (kg/lbs)
	Length	Width	Height	Width	Height	Length	Width			
20' Bulk Container	5.934m 19'5 1/2"	2.358m 7'8 3/4"	2.340 7'8 1/8"	2.335m 7'8"	2.292m 7'6 1/4"			2,450 kg 5,400 lbs	32.9 m <sup>3</sup> 1,162 cu. ft.	21,550 kg 47,690 lbs

## Tank Containers

Specifically for liquid chemicals. A limited number of containers are deployed exclusively for the transport of liquor and liquid foods.



	Separate tank fleets are available for:
20' Bulk Container	Chemical Products, e.g.: Flammables, Oxidising Agents, Toxic Substances, Corrosives Foodstuffs, e.g.: Alcohols, Fruit Juices, Edible Oils, Food Additives